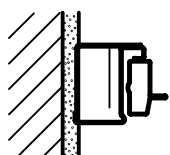
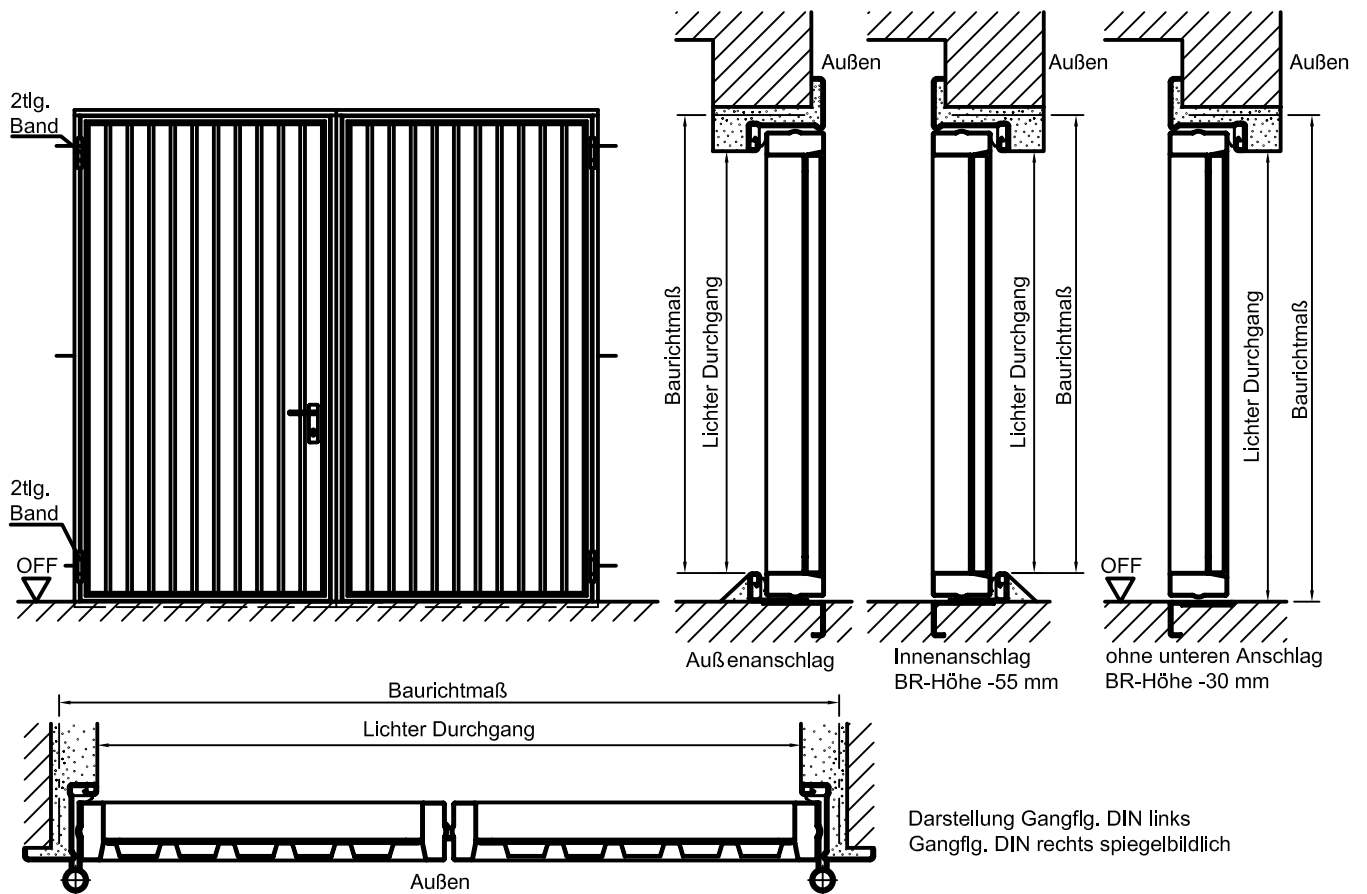
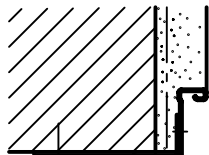


carTeck Einwandige Garagentür ew-2

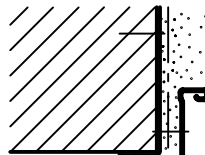
Stahl/Alu



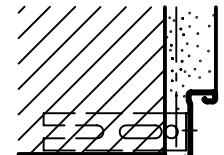
Blockzarge



Dübelmontage
Variation 1

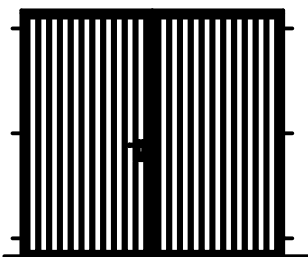


Dübelmontage
Variation 2

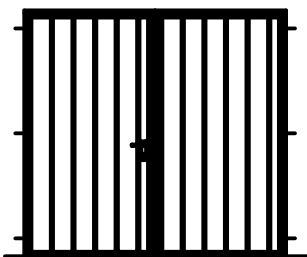


Mauerankermontage

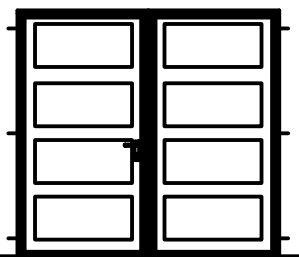
Türblatt-Variationen



Stahl senkrecht gesickt
(wahlweise waagerecht)



Stahl-Paneele



Stahl-Kassette