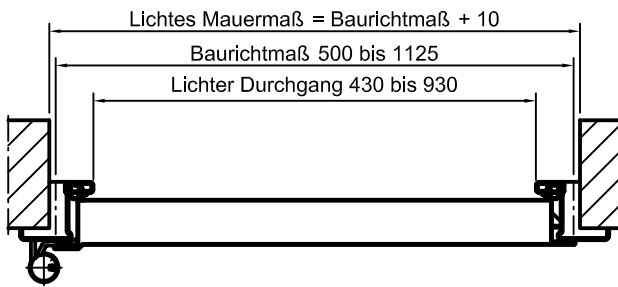
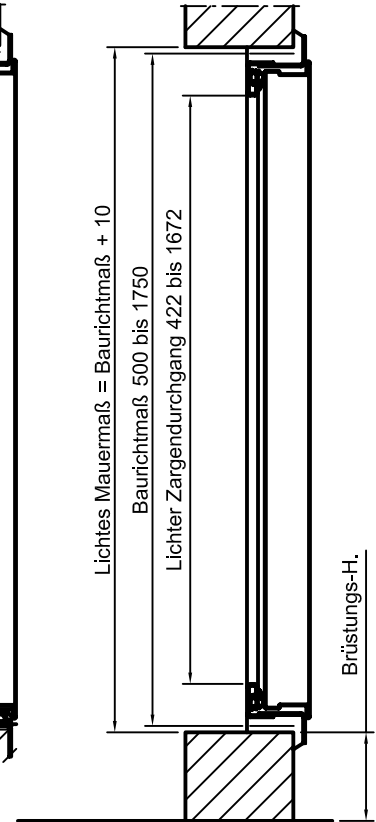
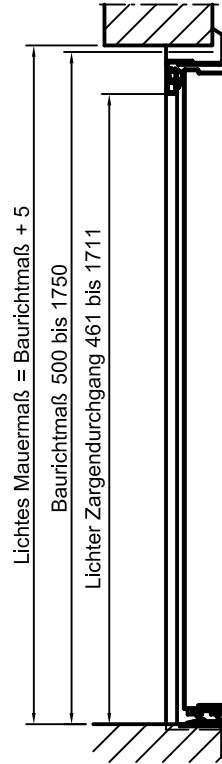
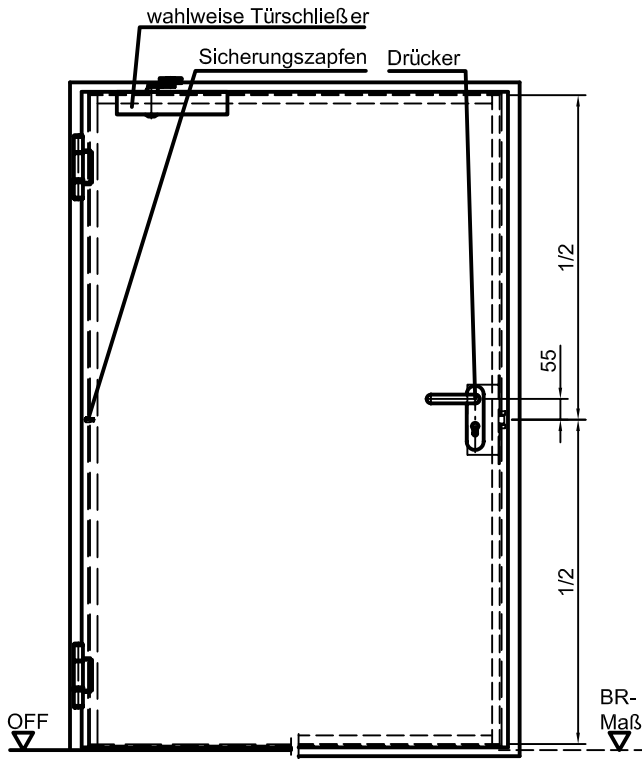


Feuerhemmende Stahlklappe T30-1 "Teckentrup HT 8-D"

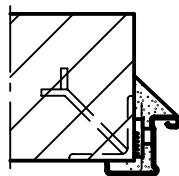
links/rechts verwendbar



Einbau in Mauerwerk- /Betonwänden

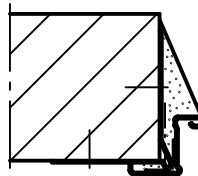
Mauerwerkwände □ 115 mm
Betonwände □ 100 mm

Anschweißmontage



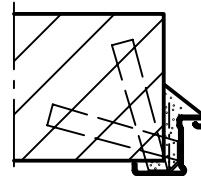
(Eckzarge)

Dübelmontage



(Eckzarge)

Mauerankermontage



(Eckzarge)